

TACT SWITCH

P/N: TSW08116-H

WATERPROOF



SPECIFICATIONS

Function: Momentary action
 Contact Arrangement: SPST, Normally Open
 Termination: THD version

Mechanical

Actuation Force: 230/250±50grams
 Life Expectancy: 100K Operations

Electrical

Contact Rating: 50mA @ 12V DC
 Dielectric Strength: 250V AC for 1minute
 Contact Resistance: 50mΩ Max.
 Insulation Resistance: 100MΩ Min.
 Travel: 0.35±0.1mm

Environmental

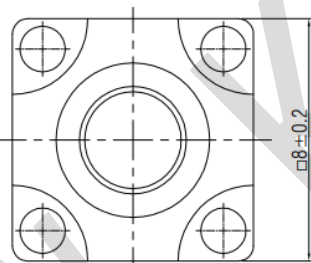
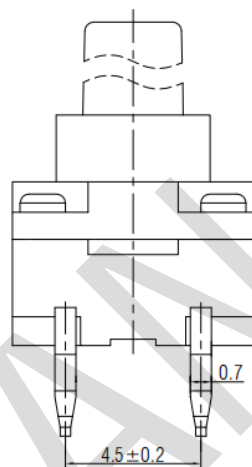
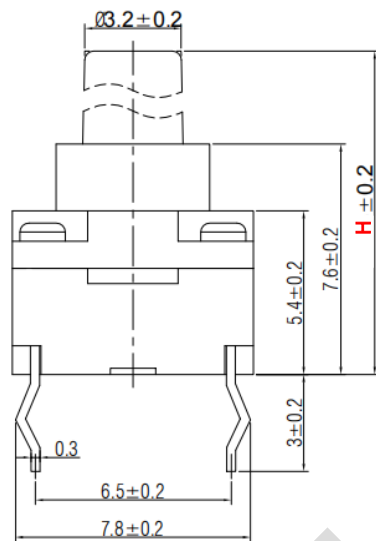
Operating Temperature: -25~+70°C
 Relative Humidity: (40°C) ≤95%

Materials

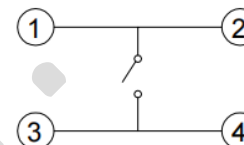
- 8.cover: Black GP.PA66
- 7.stem: Black GP.Pc
- 6.washer: rubber
- 5.membrane: PIF membrane
- inner stem: Black GP.PA66
- Contact: copper with Silver cladding
- 2.Holder: Black GP.PA66
- 1.Terminal: Copper with Silver Cladding

Packaging

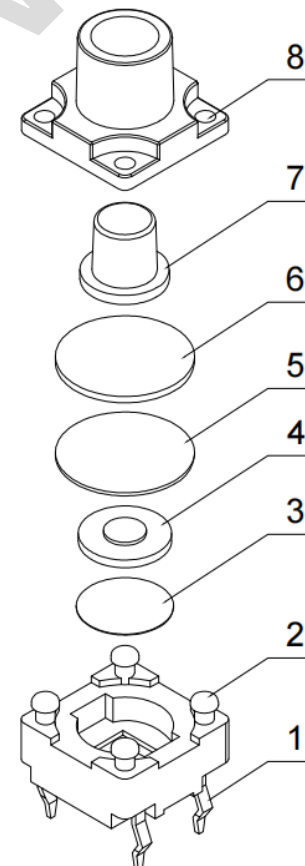
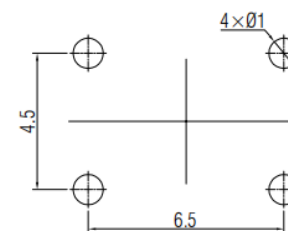
Bulk Package: Plastic bag
 Inner Package: Carton
 Outer Package: Carton



CIRCUIT DIAGRAM



P.C.B. LAYOUT



H	8.5	8.8	9	9.5	10	10.3	10.5	11	11.2	11.5
A	3.2	3.2	3.2	3.2	3.2	3.1	3.1	3.1	3.1	3.2
H	11.8	12	12.5	13	13.5	14	14.5	15	15.5	16
A	3.2	3	3.1	3.2	3.2	3.1	3.2	3	3.2	3.1
H	16.5	17	17.1	17.5	18	18.5	18.5	19	19.5	20
A	3.1	3.2	3.1	3.2	3.2	3.2	2	3	3.2	3



VERSION		PROJECTION	DESIGN	YUDA AO
KH14FE22E			DRAWN	ZHIJIE LU
SCALE	SIZE	Dimensions are shown:mm(inches) 2016.01.22	APPROVAL	JUNHUI XU
4:1	A4			