

TACT SWITCH

P/N:TSA36471



SPECIFICATIONS

Function: Momentary action
 Contact Arrangement: SPST, Normally Open
 Termination: SMD version

Mechanical

Actuation Force: 180±50grams
 Life Expectancy: 30,000 Operations

Electrical

Contact Rating: 50mA @ 12V DC
 Dielectric Strength: 250VAC for 1minute
 Contact Resistance: 100mΩ Max.
 Insulation Resistance: 100MΩ Min.
 Travel: 0.25±0.1mm

Environmental

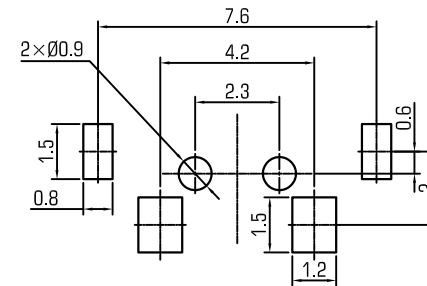
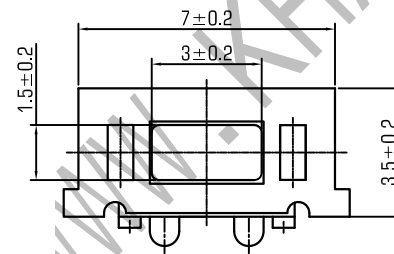
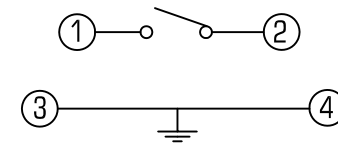
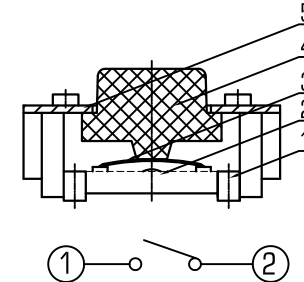
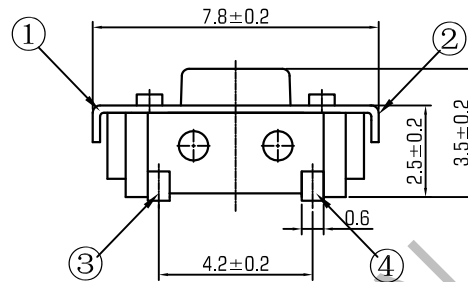
Operating Temperature: -25~+70°C
 Relative Humidity: (40°C) ≤95%

Materials

5.Stem: Black GP.PPA
 4.Cover: Copper with Sliver
 3.Contact: Stainless Steel with Silver cladding
 2.Holder: White LCP
 1.Terminal: Copper (H62Y t=0.3) with Silver Cladding

Packaging

Bulk Package
 Inner Package: Plastic bag
 Outer Package: Carton



WENZHOU KHAN ELECTRONIC

VERSION		PROJECTION	DESIGN	SHUQING ZHU
KH14FE22E			DRAWN	ZHONGJU PENG
SCALE	SIZE	 Dimensions are shown:mm(inches)	APPROVAL	JUNHUE XU
5:1	A4		2019.10.28	